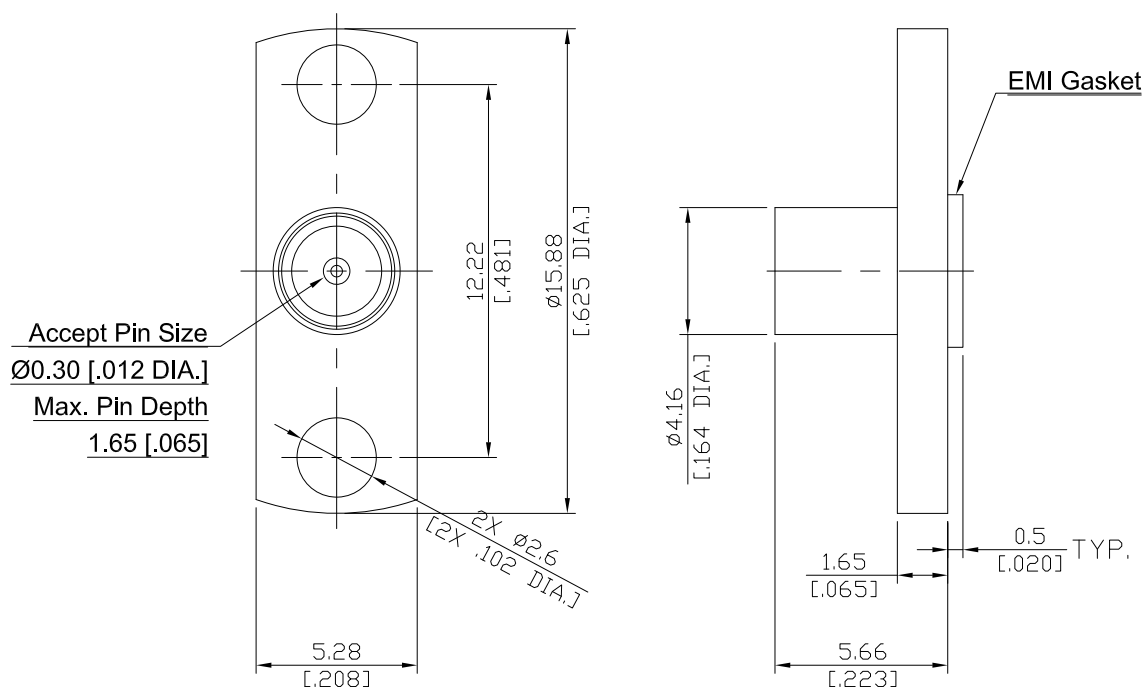


SMP Plug (Male) Full Detent Field Replaceable Connector  
2 Hole Flange Mount 0.30 mm [.012 inch] Accept Pin With EMI Gasket  
DC-40GHz, VSWR1.50

## SMP1BT50FD-0012A-EMI / 9X



All dimensions are in mm [inch]

Tolerances according to DIN ISO 2768-mH

### Interface

According to

MIL-STD-348B/326

Mateable with GPO™ (Gilbert Engineering Co., Inc)

### Electrical Data

Impedance	50 Ω
Frequency	DC to 40 GHz
VSWR (Return Loss)	≤ 1.50 (≥ 14 dB)
Insertion Loss	≤ 0.1 x √F (GHz) dB
Insulation Resistance	≥ 5 GΩ
Center Contact Resistance	≤ 6 mΩ
Outer Contact Resistance	≤ 2 mΩ
Test Voltage (at sea level)	500 V rms
Working Voltage (at sea level)	335 V rms
Power Handling	65 W @ 2.2 GHz

### Material And Plating

Piece Parts	Material	Plating
Centre contact	Beryllium Copper	Gold plating, 3 μinch (Non-magnetic nickel-phosphorus underplating, 80 μinch)
Body	Stainless Steel	Passivated
Insulator	PTFE	
EMI Gasket	Conductive Silicone Elastomers	

SMP Plug (Male) Full Detent Field Replaceable Connector  
2 Hole Flange Mount 0.30 mm [.012 inch] Accept Pin With EMI Gasket  
DC-40GHz, VSWR1.50

## SMP1BT50FD-0012A-EMI / 9X

### Mechanical Data

Coupling Mechanisms	Snap-On
Mating Cycles	Full Detent: $\geq 100$
Accept Pin	0.3 mm [.012 inch]
Center Contact Captivation	axial: $\geq 7$ N
Engagement Force	Full Detent: $\leq 68$ N
Disengagement Force	Full Detent: $\geq 22$ N

### Environmental Data

Temperature Range	-65°C to +155°C
Thermal Shock	MIL-STD-202, Meth. 107, Cond. B
Corrosion Resistance	MIL-STD-202, Meth. 101, Cond. B
Vibration	MIL-STD-202, Meth. 204, Cond. D
Shock	MIL-STD-202, Meth. 213, Cond. I
Moisture Resistance	MIL-STD-202, Meth. 106
RoHS	compliant

### Packing

Single or 100